



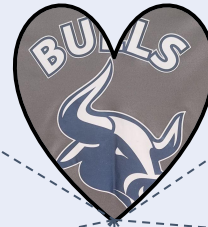
BOTHA SCHOOL

About Botha School



Village of Botha
Located 14 km East of Stettler

All Heart



Afterschool Program

- 2:50 pm - 4 pm, 5 days /week
- Safe place with a staff member
- Organized Activities
- Interactive Learning



- Pre-K to Grade 6
- Double Grades: ½, ¾, ⅝
- Small Class Sizes



Partnerships with:

- Parents
- Parent Council & School Society
- Community
- Neighbouring Schools



- Dedicated Staff
- High Quality Programming
- Small group learning
- Champions for kids



- 21st Century Learning Technology

Our Mission & Core Values

“The Future Begins With Us”



The mission at Botha School is to provide quality educational experiences for all students in a safe and caring learning environment.

Planning for 2024-2027

The planning process for Botha School's Education Plan incorporates the insights and feedback from parents, students, staff, and parent council. The information gathered has informed the identification of priorities, programming, resource allocation, professional development and collaborative work with stakeholders.



Key Satisfaction Measures parents, students and staff identified for Botha School 2021-22

95.2 %
Welcome,
Safe & Caring



83.3%
Student
Engagement



94%
Citizenship



100%
Education
Quality



98.4%
Access to
Support



[AERR Report - Botha School 2021 - 2022](#)

[Clearview Education Results Report, 2021-22](#)



**Clearview
Public Schools**

We All Belong – We All Succeed

Trends

Literacy	Data identifies literacy as an area students continue to require significant support in. Literacy skills are foundational to all learning making it a priority in Botha School's Education Plan.	<ul style="list-style-type: none">• <i>High percentage of students remain below average or needing intervention for reading skills. Results obtained from STAR & 3T Literacy Assessments</i>• <i>Comprehension ranked highest skill needing support for students</i>
Numeracy	Data identifies numeracy as an area students continue to need support in. The ability to use and understand numbers is a foundational skill to learning in all subjects.	<ul style="list-style-type: none">• <i>15 - 25% of students below average for numeracy skills. Results obtained from MIPI Assessments</i>• <i>Gr. 6 Provincial Achievement Tests above Provincial average</i>
Belonging	A small quaint school provides a unique atmosphere of belonging for students, staff and families. This continues to be part of the culture that all stakeholders want to preserve.	<ul style="list-style-type: none">• <i>Whole school projects & activities</i>• <i>Parent participation</i>• <i>Strong relationships</i>

Challenges

Enrollment

Botha School continue to be challenged by low number of students enrolled.

- Families moving
- Family work-life logistics
- After-school care
- Extra-Curricular

Extra-Curricular

Low student enrollment minimizes opportunities for team sport participation against other schools.

- Volunteers for coaching / assisting
- Minimized gym space (height)
- Teams to play against


After School Care

Parents continue to need a safe place for their children after school. Community of Botha does not have options for this outside of the school.

- The After School Program for 2024-2025 will run from 2:50pm to 4:00pm.
- Parents work schedule
- Extracurricular



Stakeholder engagement



Parents

70% Completed Survey

- Parent Input/Feedback Surveys
- School Council Meetings
- Community Engagement Meeting
- Assurance Surveys Measure
- Parent Meetings

Focus areas from feedback:

1. Opportunity for Extra-Curricular
2. Improvement in Literacy
3. Improvement in Numeracy



Parent Council

9 Council Meetings

- School Council Meetings
- Board of Trustee Involvement
- Community Engagement Meetings
- Partnership in school events

Focus areas from feedback:

1. Continue Improvement in Literacy
2. Opportunity for Enriching Learning Experiences & Extra-Curricular
3. Improvement in Numeracy



Staff

15 Staff / Professional Development Sessions

- Monthly Staff Meetings
- Professional Development
- Assurance Surveys Measure
- Division School Visits
- Board of Trustees Visits

Focus areas from feedback:

1. Professional Development & Resources for New Curriculum
2. Opportunities to increase Student Engagement
3. Literacy & Numeracy Intervention Support

Botha School works to engage with all Stakeholders to gain insight and understanding of ways learning & experiences can be developed to provide high quality education for all students. Feedback provided has been, and will continue to be used for the planning of programming, resources and professional development that meets the needs of our school.

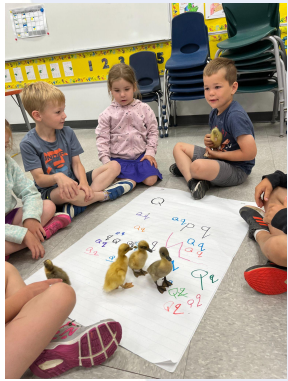
How Botha School is seen by families...

connection
excellence small-classes
kind caring inclusive
inspiring friendly helpful community-minded
botha-school hands-on community safe family impactful
fun awesome welcoming
family-like supportive warm

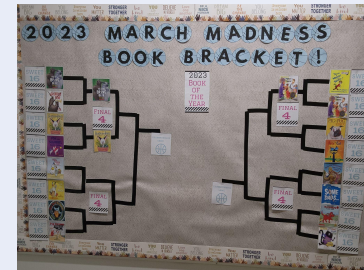


Clearview
Public Schools
We All Belong – We All Succeed

Highlights, Programs & Successes



- Start Right Playschool
- Part-time Kindergarten
- Literacy & Numeracy Focus
- Implemented Technology
- Indigenous Studies
- Life Skill Learning
- Community Partnership~
 - Botha Senior Centre
 - Stettler & Area Family Resource Network
 - Stettler & District Food Bank
- Mental Health Learning
- Family School Liaison (FSL)
- Nutrition Program
- Hot Lunch



**Clearview
Public Schools**
We All Belong – We All Succeed

First Nation, Metis and Inuit student success

Students and staff at Botha School continue to grow their knowledge about the Indigenous culture in context of our school, our province and our country. We want all students to have a strong understanding of Foundational FNMI Knowledge. We must ensure that we deliver the highest quality programming to honour First Nations, Metis & Inuit cultures, the history, experiences and legacy of residential schools.

Grades 5-6 Indigenous Studies Class

- Learn about culture of the many different Indigenous groups in our school, province & country through reading, experiences, and oral stories.
- Shared student stories
- Visual board of learning

Whole-School

- Land Acknowledgement
- Orange Shirt Day
- National Indigenous Day
- Increase texts inclusive of Indigenous culture for students to access both in classroom & library
- Field trip experiences with Indigenous culture focus
- Teaching staff on Indigenous Education Committee



FOCUS: LITERACY ~

INCREASED LITERACY SKILLS AMONG ALL STUDENTS

Performance Measures

- Reading Literacy- percentage of students reading at or above grade level as measured by:
 - Test of Word Reading Efficiency (TOWRE)
 - Test of Silent Reading Efficiency & Comprehension (TOSREC-2)
 - Test of Silent Reading Fluency (TOSRF-2)
- Provincial Achievement Tests



Strategies

- Consistent Literacy resources throughout all grade levels
- Intervention groups built into timetable
- Developing community partnerships that support literacy learning
- Review of assessment practices
- Collaboration among staff

Budget Supports & Resources

- Professional Development of effective literacy instruction
 - Layers of Literacy
 - UFLI
 - Heggerty
 - Rewards
- Increase literacy resources available for students & staff:
 - Decodable books available for students
 - Phonic/Phonemic
 - Comprehension
- Staff assigned to intervention groups

FOCUS: NUMERACY ~

INCREASED MATH PROFICIENCY AMONG ALL STUDENTS

Performance Measures

- **Universal Math Assessment**
 - EICS Math Assessment Gr. 1-6
- **Math Running Records for numeracy strategy assessments**

Strategies

- **Professional Development of effective numeracy instruction**
- **Availability of Math resources:**
 - Manipulatives for hands on learning
 - Digital
- **Implementation of Guided Math from grade 1 - 6.**

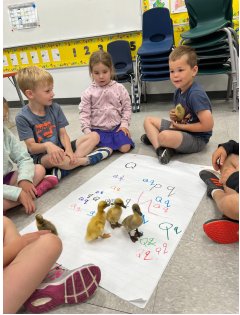
Budget Supports & Resources

- **Professional Development of effective numeracy instruction**
- **Purchase of Math supports for students & teacher:**
 - Guided Math Resources
 - Explore Learning: Frax, Reflex
- **Purchase of Manipulatives**



FOCUS: STUDENT ENGAGEMENT ~

INCREASED ENGAGEMENT OF ALL STUDENTS IN ALL ASPECTS OF SCHOOL LIFE



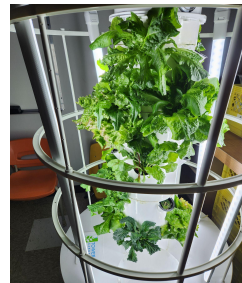
Performance Measures

- Attendance
- Assurance Measure Results
- Student Participation
 - Spirit Days
 - Extra-Curricular
 - Special Projects



Strategies

- Whole School Activities
 - Assemblies
 - Spirit Days
 - Projects
 - Mentorship/Leadership
- Visual learning practices
- Professional Development
 - Concept Based Learning
- Review of assessment practices
- Collaboration among staff



Learning Disruption

Addressing the learning gaps in our students:

- review essential outcomes from the previous grade
- focus on the **essential** outcomes for the new grade
- allow for larger blocks of time for ELA and Math focus
- use tools such as 3T to identify areas of need in reading added Educational Assistant opportunities within the ELA and Math classes in grades 1-6 to allow for more focused instruction to single grades
- continue with literacy intervention to focus on reading skills in small groups

Professional Learning Plan

Date	Learning Activities
August 27, 2024	Welcome Back Activities, Structure for upcoming year, Collaboration, Communication, Connection
August 28, 2024	Clearview Day – Inclusion
August 29, 2024	School Based – Inclusion Workshops
August 30, 2024	School Based – Inclusion Workshops
September 27, 2024	School Based – Inclusion
October 11, 2024	School Based - 3T data
November 1, 2024	Numeracy Collaborative Workshops
November 22, 2025	School Based - Guided Math Reflection/Updates
Jan 29, 2025	School Based
March 21, 2025	School Based
April 22, 2025	School Based – Writing Assessments
May 16, 2025	Transition Meetings
June 26, 2025	Reflect & Wrap up

Contact Us



Joy Corpataux
Principal & 5/6
jcorpataux@clearview.ab.ca
(403) 742-5187



Aimee Cripps
Kindergarten



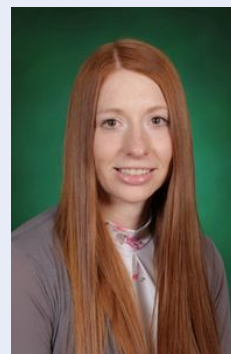
Kerry Hellebo-Petersen
Grade 1/2



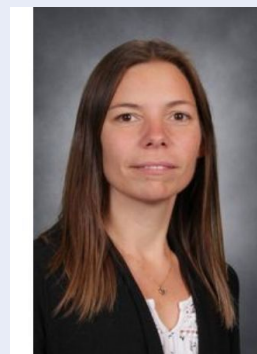
Nadine Maxwell
Grade 3/4



Gayle McMillan
Administrative Assistant



Trissel Diegel
Educational Assistant



Lisa Reiter
Educational Assistant



**Clearview
Public Schools**
We All Belong – We All Succeed