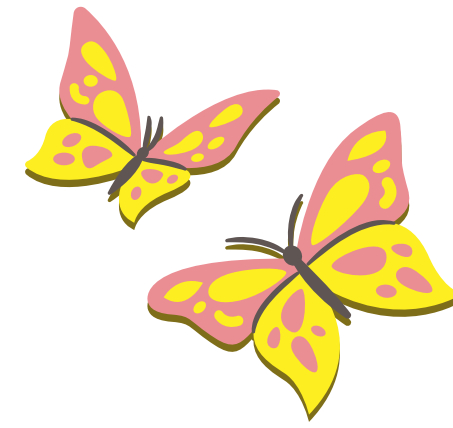
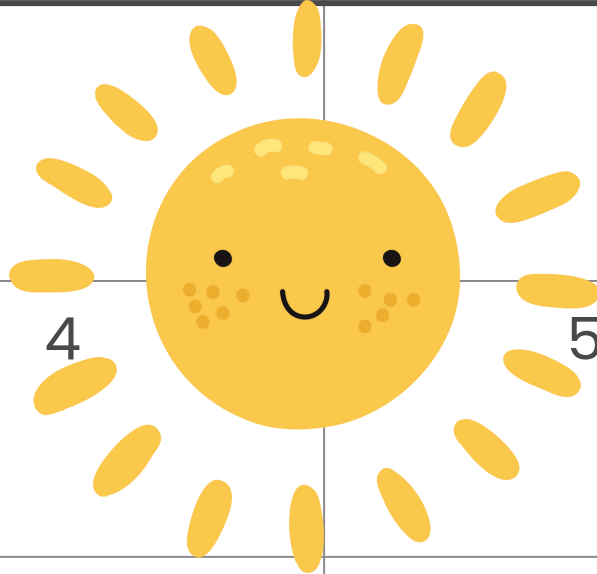

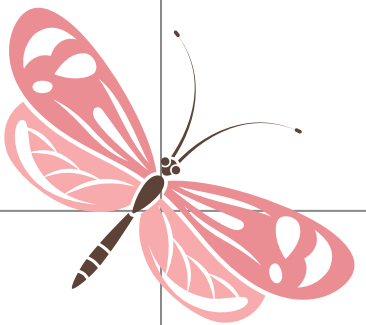
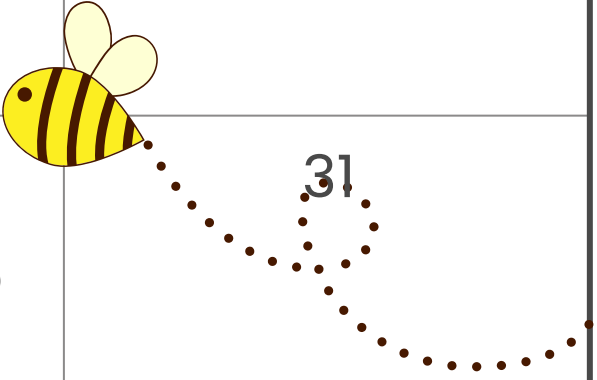




# 2025 May



Sunday	Monday	Tuesday	Wednesday	Thursday	Friday	Saturday
 45				1 Hot Lunch	2	3
		6	7	8 Spring Carnival 4:30-8 Spirit Day -Wear Yellow Hot Lunch	9	10
11  Mothers Day	12	13	14 	15  Hot Lunch	16  PD - No School	17
18	19  No School	20	21	22 Spirit Day - Rubix Cube Day Hot Lunch	23	24
25	26  Farm Safety - K to 6	27	28 ELA Part A PAT - Gr. 6 Grade 5 - 6 Camp	29  Grade 5 - 6 Camp Hot Lunch	30  Grade 5 - 6 Camp	31 

### **Hot Lunch**

May 1 – Boston Pizza

May 8 – Hamburger

May 15 – Tatertot Casserole

May 29 – Baked Spaghetti

### **Farm Safety – K to 6**

These presentations are developed by Heartland

Training and Support Hub. They will be approx.

30 minutes presented virtually for each grade.

### **Spring Carnival**

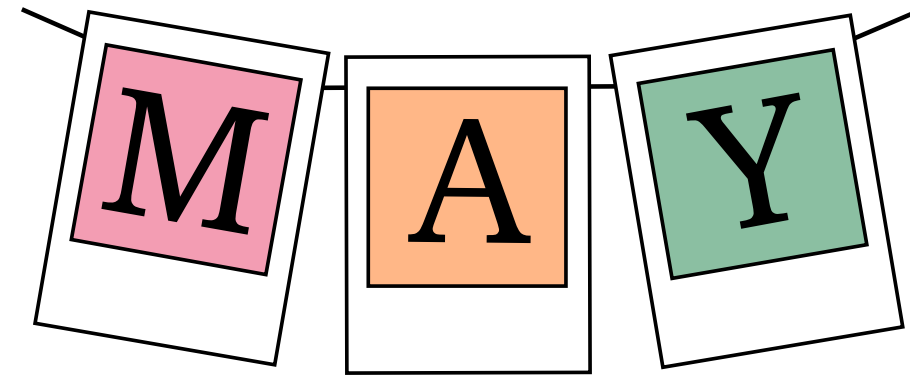
The Students Union from W.E.Hay are putting on a spring carnival.

It is for all ages and starts at 4:30pm – 8:00pm.

### **No School for students**

May 16

May 19



### **Grade 6 ELA PAT Part 1**

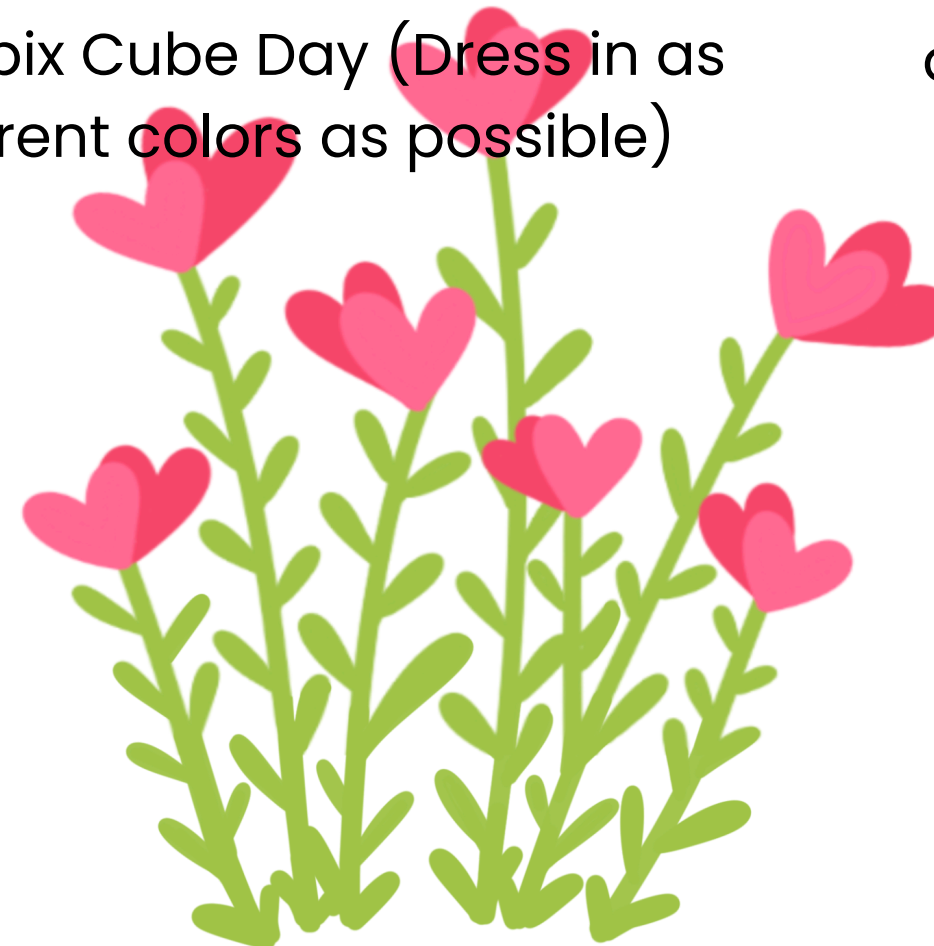
**May 28 at 9AM**

All grade 6 students will write their PAT and go to grade 6 camp after.

### **Spirit Days**

May 8– Wear Yellow

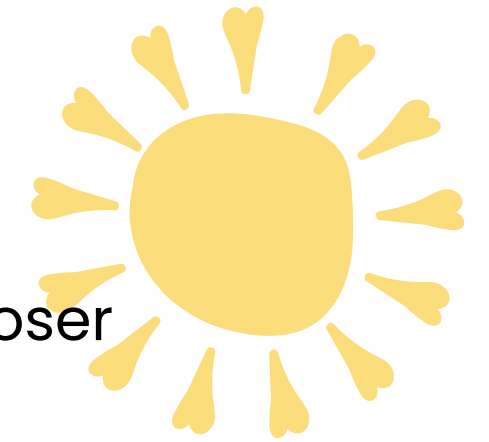
May 22 – Rubix Cube Day (Dress in as many different colors as possible)



### **Grade 5 / 6 Camp**

May 28, 29, 30

\*More information will come out closer to the start date.



### **Grade 5 / 6 Camp**

Grade 5/6 students will be at Circle Square from May 28 until May 30. If you have misplaced the form please let us know and we will print you a new one. More information will come out as we approach the departure date!

### **Track Meet**

Volunteer forms are due back May 14.

Bussing permission slips will be sent out towards the end of May.



# STUDENT OF THE WEEK

Celebrating the "Student of the Week" is a wonderful initiative that recognizes and honors students for their hard work, dedication, and positive contributions to the school community. This accolade not only boosts the morale of the chosen student but also inspires their peers to strive for excellence. The selection is based on various criteria such as academic performance, improvement, leadership skills, kindness, and school spirit. Being named "Student of the Week" offers students a moment to shine and encourages them to continue their efforts. It also fosters a positive school environment where achievements are celebrated, and students feel valued and motivated. Staff members and fellow peers are able to nominate students.

## March Student of the Week

**Kaden**  
**Riley**  
**Amora**  
**Dane**  
**Mac**

