



# BOTHA SCHOOL

# About Botha School



**Village of Botha**  
Located 14 km East of Stettler

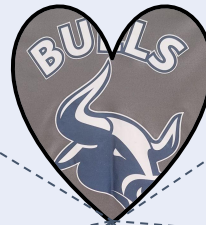


- Pre-K to Grade 6
- Double Grades:  $\frac{1}{2}$ ,  $\frac{3}{4}$ ,  $\frac{5}{6}$
- Small Class Sizes



- Dedicated Staff
- High Quality Programming
- Small group learning
- Champions for kids

All Heart



- 21st Century Learning Technology



## Afterschool Program

- 2:50 pm - 4 pm, 5 days /week
- Safe place with a staff member
- Organized Activities
- Interactive Learning



Partnerships with:

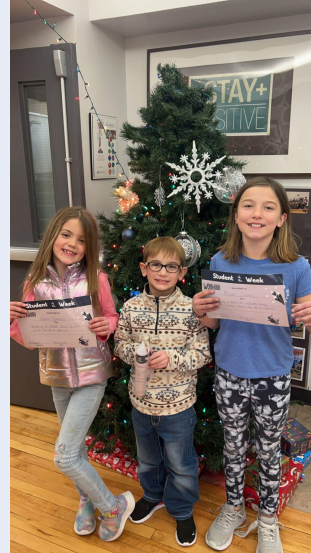
- Parents
- Parent Council & School Society
- Community
- Neighbouring Schools





# Our Mission & Core Values

**“The Future Begins With Us”**



*The mission at Botha School is to provide quality educational experiences for all students in a safe and caring learning environment.*

# Planning for 2025-2028

**The planning process for Botha School's Education Plan incorporates the insights and feedback from parents, students, staff, and parent council. The information gathered has informed the identification of priorities, programming, resource allocation, professional development and collaborative work with stakeholders.**

## [Botha School AERR report 2024](#)

From the AERR results and following the vision of Clearview, we will continue to focus on literacy and numeracy, which will ultimately impact student engagement; another focus area.





# Trends

- A small quaint school provides a unique atmosphere of belonging for students, staff and families. This continues to be part of the culture that all stakeholders want to preserve.
- By working together to share best practices and focus our instruction, we can drive meaningful growth in results while continuing to foster a welcoming, positive culture focused on student success.
- Literacy results have been strong, and we will continue to build on this success by focusing on comprehension, fluency, decoding, and writing. Numeracy results highlight this as a key area for growth moving forward.

# Challenges

- Parents continue to rely on a safe, structured environment for their children after school. In the community of Botha, the school and its after-school program remain the only available options to meet this important need.
- Botha School continues to navigate challenges with low student enrollment, driven by factors such as family relocations, work-life demands, and limited after-school care options. Moving forward, we are committed to exploring strategies that address these barriers and strengthen the school's appeal and accessibility for families in the community.



# Stakeholder engagement

**Botha School works to engage with all Stakeholders to gain insight and understanding of ways learning & experiences can be developed to provide high quality education for all students. Feedback provided has been, and will continue to be used for the planning of programming, resources and professional development that meets the needs of our school.**

## Parent Council



### 9 Council Meetings

- School Council Meetings
- Board of Trustee Involvement
- Community Engagement Meetings
- Partnership in school events

#### Focus areas from feedback:

1. Continue Improvement in Literacy
2. Opportunity for Enriching Learning Experiences & Extra-Curricular
3. Improvement in Numeracy

## Staff



### 15 Staff / Professional Development Sessions

- Monthly Staff Meetings
- Professional Development
- Assurance Surveys Measure
- Division School Visits
- Board of Trustees Visits

#### Focus areas from feedback:

1. Professional Development & Resources for New Curriculum
2. Opportunities to increase Student Engagement
3. Literacy & Numeracy Intervention Support



**Clearview  
Public Schools**

We All Belong – We All Succeed

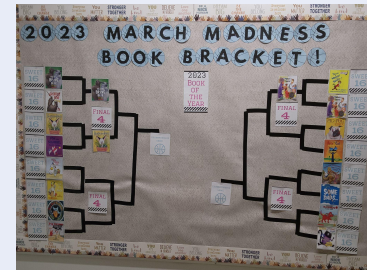
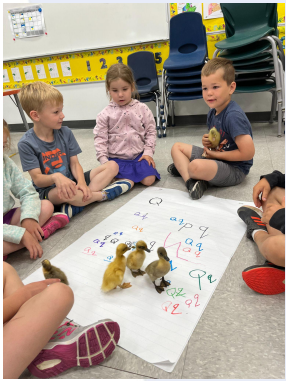


# How Botha School is seen by families...

connection  
excellence small-classes  
kind caring inclusive  
inspiring friendly helpful community-minded  
botha-school community safe family  
hands-on impactful  
fun awesome welcoming  
family-like supportive warm

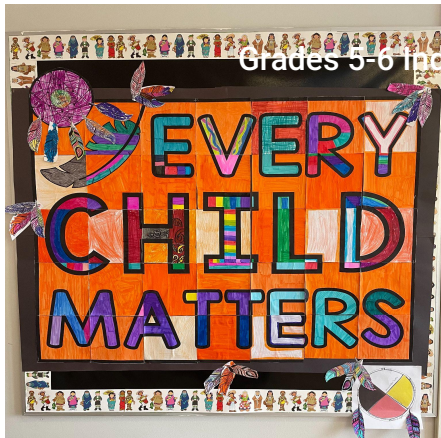
# Highlights, Programs & Successes

- Start Right Playschool
- Part-time Kindergarten
- Literacy & Numeracy Focus
- Implemented Technology
- Indigenous Studies
- Life Skill Learning
- Community Partnership~
  - Botha Senior Centre
  - Stettler & Area Family Resource Network
  - Stettler & District Food Bank
- Mental Health Learning
- Family School Liaison (FSL)
- Nutrition Program
- Hot Lunch



# First Nation, Metis and Inuit student success

Students and staff at Botha School continue to grow their knowledge about the Indigenous culture in context of our school, our province and our country. We want all students to have a strong understanding of Foundational FNMI Knowledge. We must ensure that we deliver the highest quality programming to honour First Nations, Metis & Inuit cultures, the history, experiences and legacy of residential schools.



## Whole-School

- Land Acknowledgement
- Orange Shirt Day
- National Indigenous Day
- Increase texts inclusive of Indigenous culture for students to access both in classroom & library
- Field trip experiences with Indigenous culture focus
- Teaching staff on Indigenous Education Committee



# FOCUS: LITERACY ~

*INCREASED LITERACY SKILLS AMONG ALL STUDENTS*

## Performance Measures

- Reading Literacy- percentage of students reading at or above grade level as measured by:
  - Test of Word Reading Efficiency (TOWRE)
  - Test of Silent Reading Efficiency & Comprehension (TOSREC-2)
  - Test of Silent Reading Fluency (TOSRF-2)
- Provincial Achievement Tests



## Strategies

- Consistent Literacy resources throughout all grade levels
- Intervention groups built into timetable
- Division PD focus on Literacy
- Review of assessment practices
- Collaboration among staff

## Budget Supports & Resources

- Professional Development of effective literacy instruction
  - Layers of Literacy
  - UFLI
  - Heggerty
  - Rewards
- Increase literacy resources available for students & staff:
  - Decodable books available for students
  - Phonic/Phonemic
  - Comprehension
- Staff assigned to intervention groups

# FOCUS: NUMERACY ~

*INCREASED MATH PROFICIENCY AMONG ALL STUDENTS*

## Performance Measures

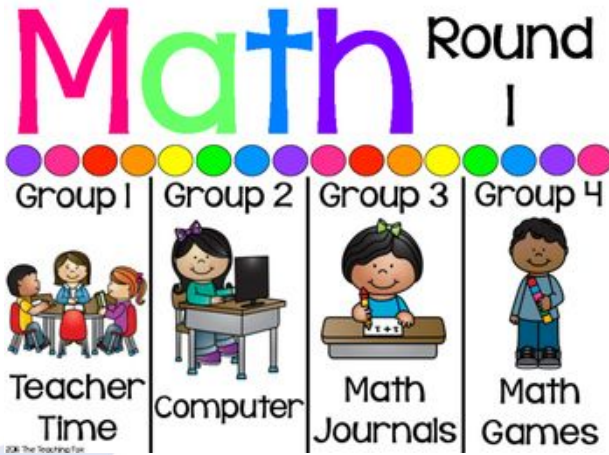
- Math Assessment
  - Math Map
- Math Running Records for numeracy strategy assessments

## Strategies

- Professional Development of effective numeracy instruction
- Availability of Math resources:
  - Manipulatives for hands on learning
  - Digital
- Implementation of Guided Math from grade 1 - 6.
- Small group, guided math instruction is used to ensure each student receives individualized instruction and support.
- Number talks are used in classrooms weekly to enhance problem solving and critical thinking numeracy skills.

## Budget Supports & Resources

- Professional Development of effective numeracy instruction
- Purchase of Math supports for students & teacher:
  - Guided Math Resources
  - Explore Learning: Frax, Reflex
- Purchase of Manipulatives



# FOCUS: STUDENT ENGAGEMENT ~

*INCREASED ENGAGEMENT OF ALL STUDENTS IN ALL ASPECTS OF SCHOOL LIFE*



## Performance Measures

- Attendance
- Assurance Measure Results
- Student Participation
  - Spirit Days
  - Extra-Curricular
  - Special Projects



## Strategies

- Whole School Activities
  - Assemblies
  - Spirit Days
  - Projects
  - Mentorship/Leadership
- Visual learning practices
- Professional Development
  - Concept Based Learning
- Review of assessment practices
- Collaboration among staff



**Clearview  
Public Schools**  
We All Belong – We All Succeed



# Learning Disruption

## Addressing the learning gaps in our students:

- review essential outcomes from the previous grade
- focus on the **essential** outcomes for the new grade
- allow for larger blocks of time for ELA and Math focus
- use tools such as 3T to identify areas of need in reading added Educational Assistant opportunities within the ELA and Math classes in grades 1-6 to allow for more focused instruction to single grades
- continue with literacy intervention to focus on reading skills in small groups



# Professional Learning Plan

Date	Learning Activities
August 26, 2025	School Based - Student Engagement - Total Participation Techniques
August 27, 2025	Division Based PD
August 28, 2025	School Based - Literacy - Literacy Instruction Strategies and Interventions
August 29, 2025	School Based - Numeracy - Guided Math
September 29, 2025	School Based - Inclusive Education - IPP Development and Routines and Procedures to ensure Student Success
October 10, 2025	Division Based PD
November 28, 2025	Division Based PD
December 12th	School Based - Numeracy - Using Manipulatives Effectively
January 30, 2026	School Based - Student Engagement and Inclusive Education - Instructional Strategies to Build Student Success
March 20, 2026	School Based - Literacy - 3T Data Review
April 24, 2026	Division Based PD
May 15, 2026	School Based - Inclusive Education - Transition Planning for Student Success
June 25, 2026	School Based - Year End Wrap Up and Setting up Success for 2026-2027!

# Contact Us



Joy Corpataux  
Principal  
[jcorpataux@clearview.ab.ca](mailto:jcorpataux@clearview.ab.ca)  
(403) 742-5187



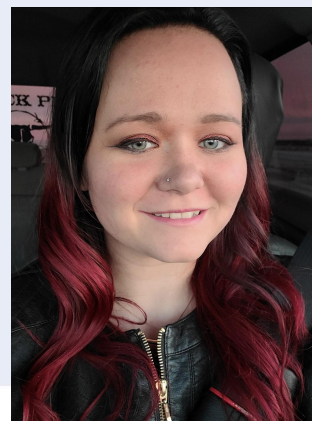
Kerry Hellebo-Petersen  
Grade 1/2



Sheila Leys  
Grade 3/4



Lisa Reiter  
Administrative Assistant



Stephanie Schmidt  
Educational Assistant



Sherri Beier  
Grade 5/6